



Access to health data

SAPHIRe workshop

29 October 2020

How can we enhance research for more healthy years and data driven prevention?

Ilse Broeders, project manager i.m.broeders@lifelines.nl

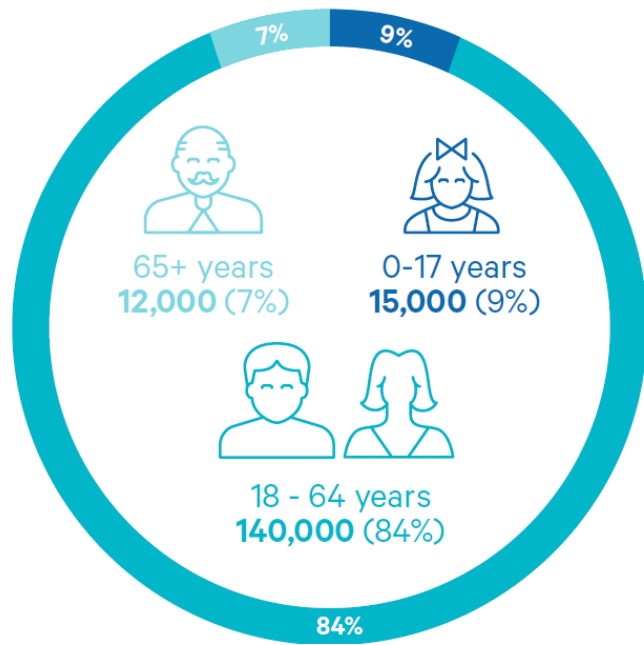
what is Lifelines

cohort and biobank:

- **longitudinal** collection of data & biomaterials
- **general index population** (n=167,000)
- **representative of Northern provinces (NL)**
- **Inclusion of three generations**
 - Adults, children, elderly

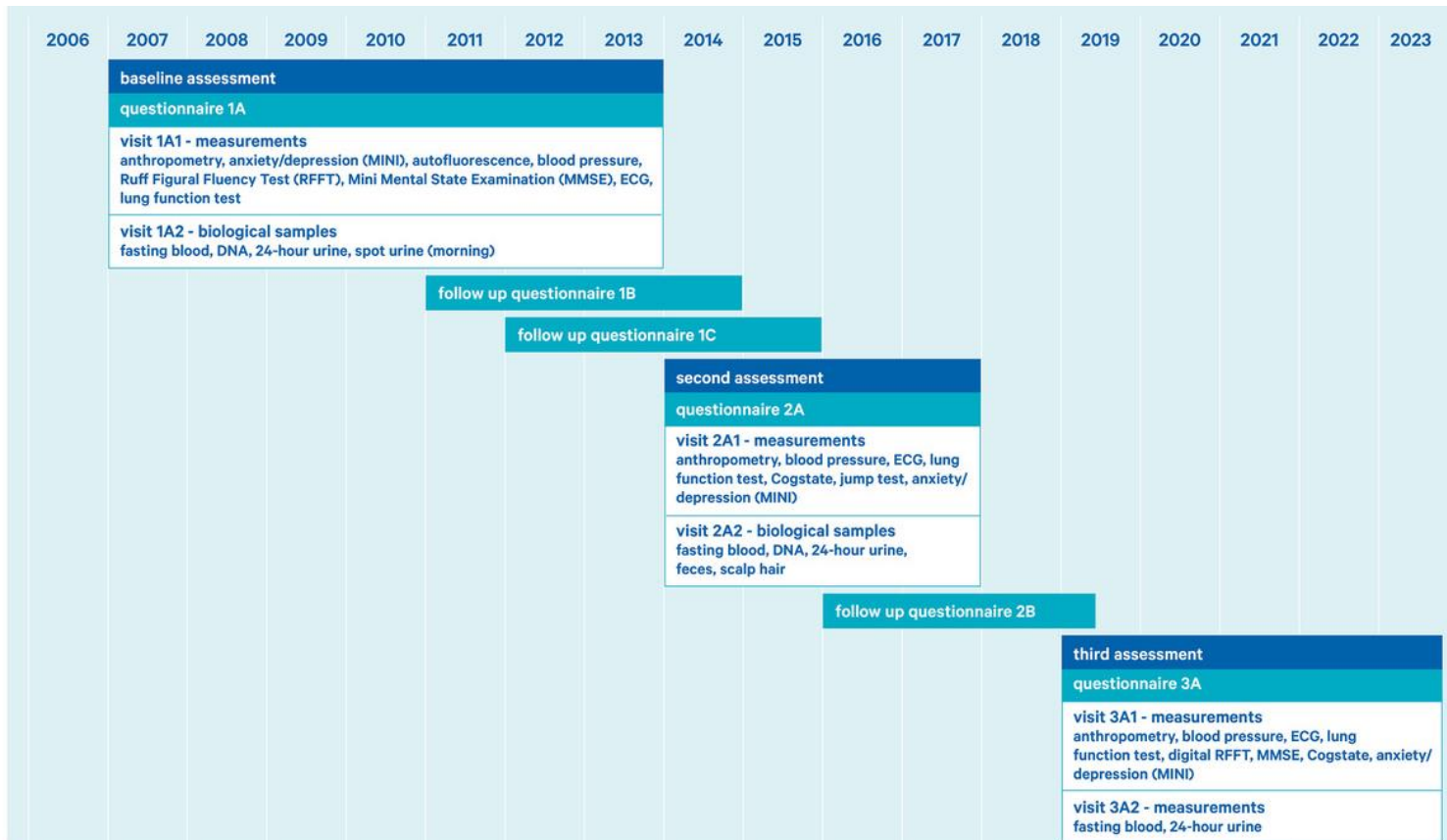
our mission

to make data and samples available **worldwide**
 for multidisciplinary research
 in the field of **healthy ageing**



total: 167,000 participants

timeline measure points



additional study: COVID-19

How are you doing in this pandemic?

additional data collection is possible

- design an **additional study** (fee for service)
- **benefit** from our cohort & infrastructure
- respond to new **actualities**, like COVID-19, earthquakes
- adapt to latest scientific insights with genetic/omics data, microbiome studies



[The Lifelines COVID-19 cohort paper](#)

success factors data access

flexible and fast data access

- easy and fast data access procedures
 - <https://data-catalogue.lifelines.nl/menu/main/home>
- use of TTPs, pseudonimisation, encryption
- high resolution data model
- tailored datasets
- improve data quality



Shop Cart

Select Participants

Age at **1** <<

baseline

0-17 18-64 65+

Year of birth

Gender **1**

Male Female

Subcohorts **1**

GWAS UGLI DEEP DAG3

170k Participants

Select Assessments

View data

Demographics	▲
Diseases & symptoms	▲
Elderly	▲
Family health	▲
Lifestyle & environment	▲
Medical treatment	▲
Mental health	▲
Nutrition	▲
Physical state	▲
Reproduction & develop...	▲
Secondary & linked data	▲
Wellbeing & subjective...	▲

success factors data access (2)

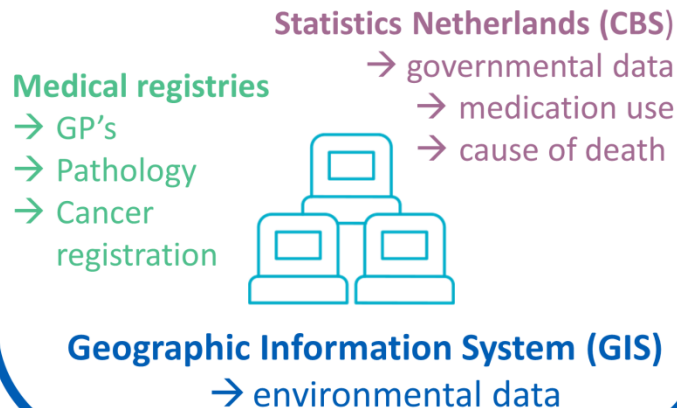
combining data sources

- linkage with respect for **privacy!**
 - use of TTPs, pseudonimisation, encryption
 - real world data evidence

- **GEO health opportunities**
 - health disparities
 - Neighbourhood SES
 - environmental risk factors
 - exposome data

data linkage

Lifelines data can be linked to data from external registries without revealing the identity of participants.



success factors data access (3)

create data insight

- share results

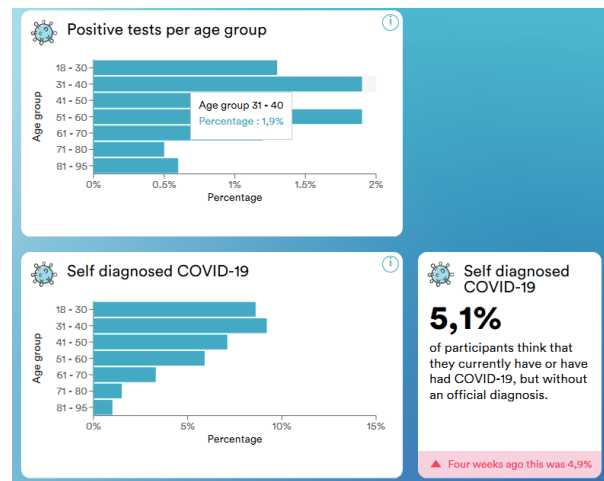
- www.coronabarmeter.nl

- provide metadata information

- <http://wiki-lifelines.web.rug.nl/doku.php>

- excellent data management services

...to create a bigger impact on society together for more healthy years!





questions?

together for more healthy years

Ilse Broeders, project manager i.m.broeders@lifelines.nl